

Figure S1. Calibration curve of the nomograms for predicting 1-, 2-, and 3-year CSS and OS in elderly MIBC patients with radical cystectomy in the external validation set. A: Calibration curve of the nomograms for predicting CSS in the external validation set. B: Calibration curve of the nomograms for predicting OS in the external validation set.

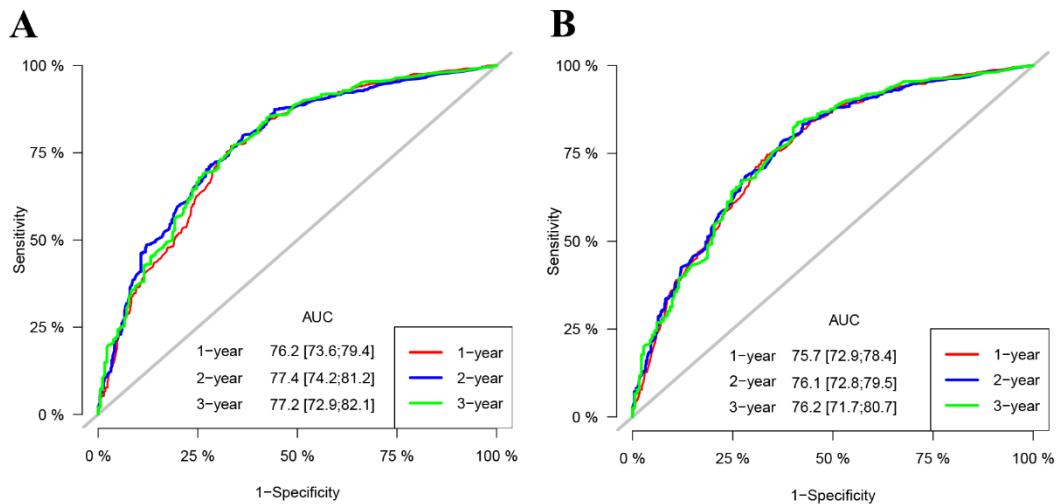


Figure S2. AUC for predicting 1-, 2-, and 3-year CSS and OS in elderly MIBC patients with radical cystectomy in the external validation set. A: The AUC for CSS in the external validation set. B: The AUC for OS in the external validation set.