

1 **Supplementary Materials**

2
3 **Identifying stress-induced heterogeneity in $\text{Cu}_{20}\text{Zr}_{20}\text{Ni}_{20}\text{Ti}_{20}\text{Pd}_{20}$ high-entropy**
4 **metallic glass from machine learning atomic dynamics**

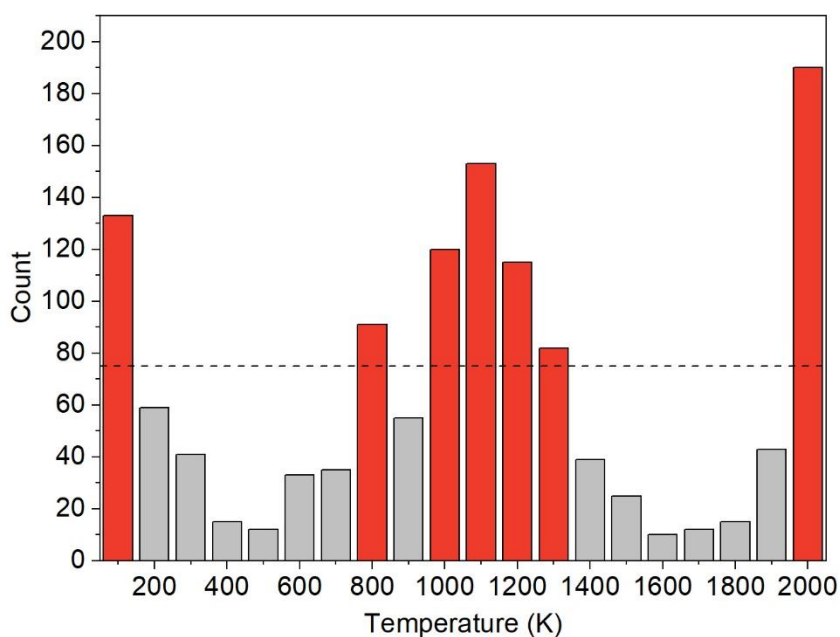
5
6 **Xiaodi Liu¹, Wenfei Lu^{1,2}, Wenkang Tu¹, Jun Shen^{1,*}**

7
8 ¹College of Mechatronics and Control Engineering, Shenzhen University, Shenzhen
9 518060, Guangdong, China.

10 ²School of Materials Science and Engineering, Tongji University, Shanghai 201804,
11 China.

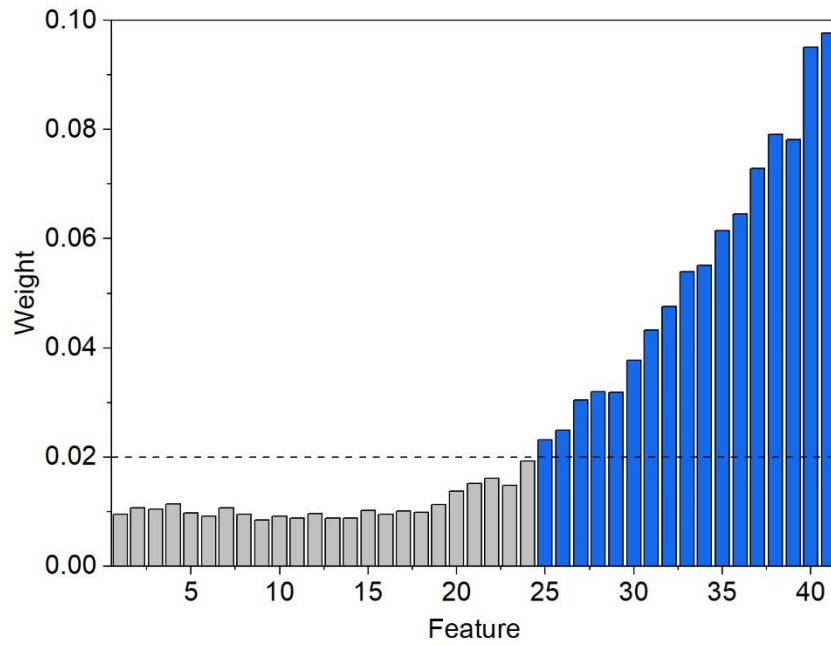
12
13 ***Correspondence to:** Prof. Jun Shen, College of Mechatronics and Control
Engineering, 14 Shenzhen University, 3688 Nanhai Road, Shenzhen 518060,
Guangdong, China. E-mail: junshen@szu.edu.cn

16
17 **ORCID:** Jun Shen (0000-0003-4082-5173)



19
20 **Supplementary Figure 1. Statistical results of representative class selection.**

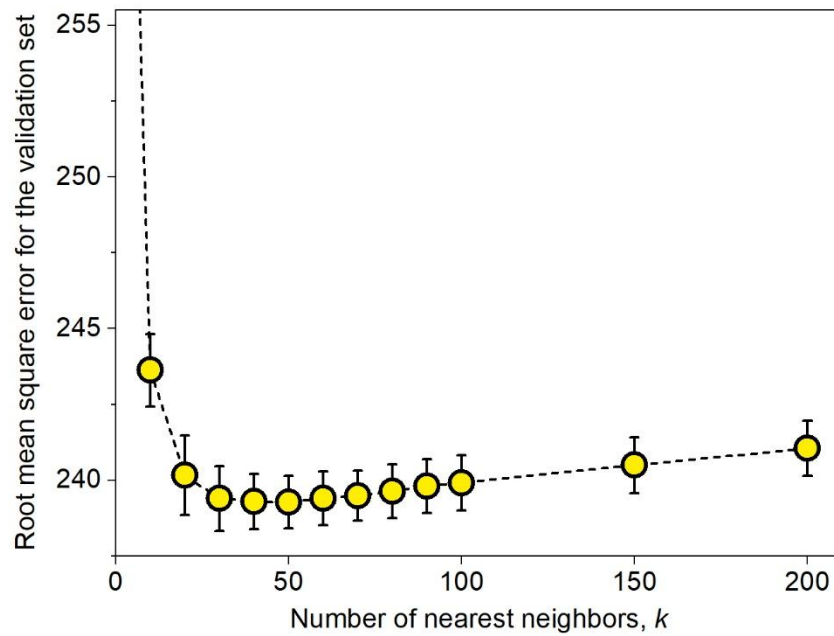
21



22

23 **Supplementary Figure 2. Feature importance measured by weight.**

24

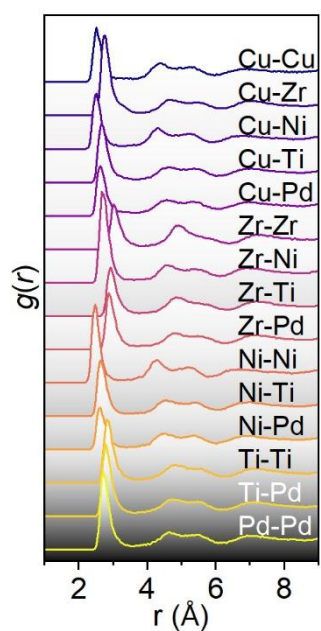


25

26 **Supplementary Figure 3. Variation of the root mean square error with the**
 27 **number of nearest neighbors.**

28

29



30

31 **Supplementary Figure 4. Partial radial distribution functions. The cutoff radii are**
 32 **defined as the value at the first troughs.**

33

34 **Supplementary Table 1. Initial feature list**

Feature Number	Δt (ps)
1	0.01
2	0.02
3	0.03
4	0.04
5	0.05
6	0.06
7	0.08
8	0.1
9	0.13
10	0.16
11	0.2
12	0.25
13	0.32
14	0.4

15	0.5
16	0.63
17	0.79
18	1
19	1.3
20	1.6
21	2
22	2.5
23	3.2
24	4
25	5
26	6.3
27	7.9
28	10
29	13
30	16
31	20
32	25
33	32
34	40
35	50
36	63
37	79
38	100
39	126
40	158
41	200
