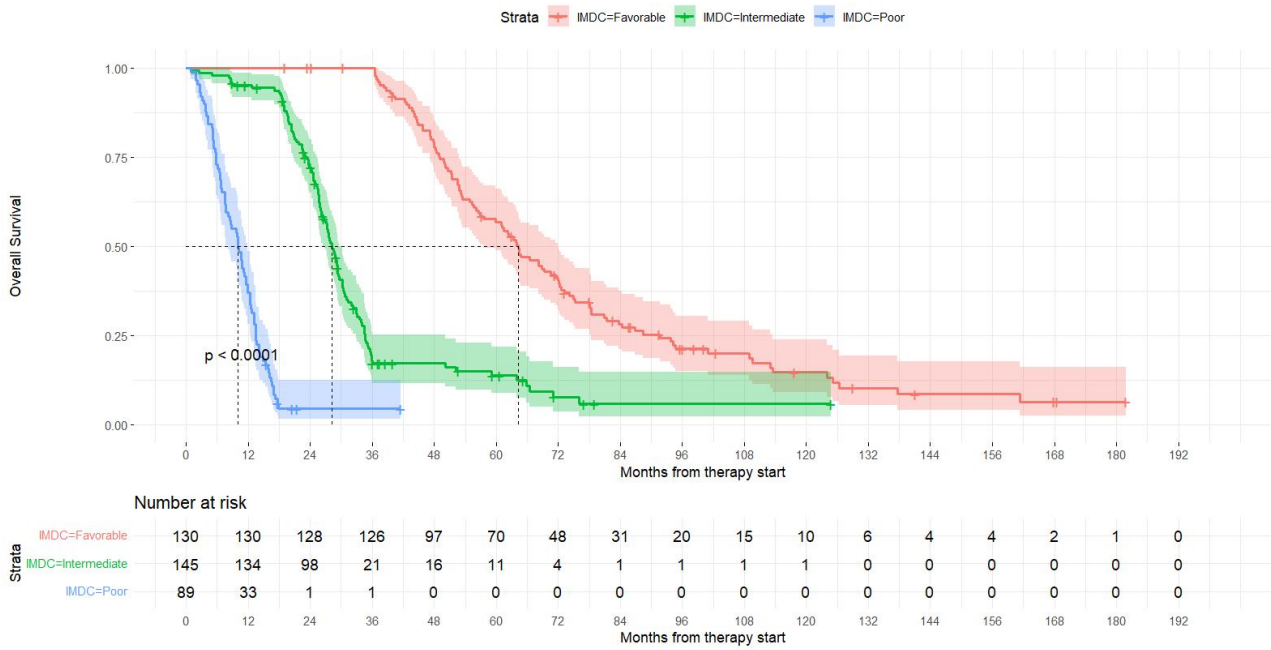
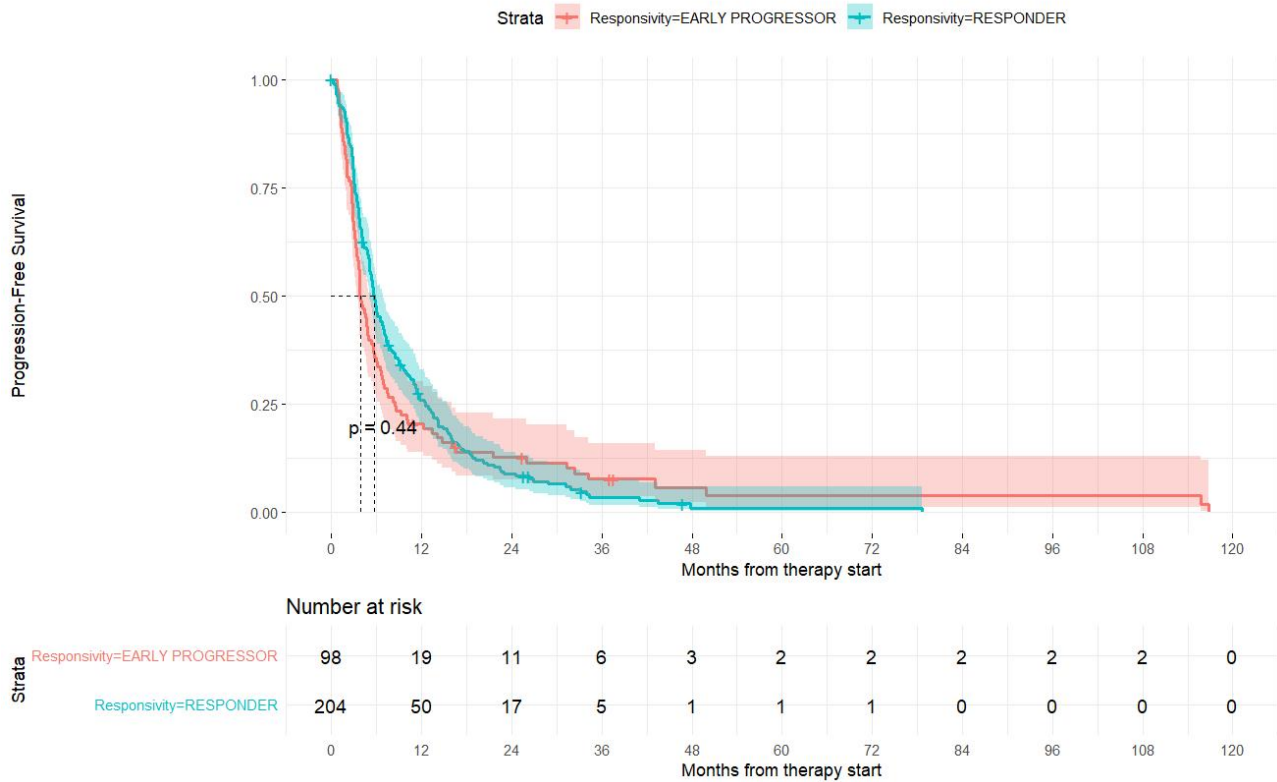


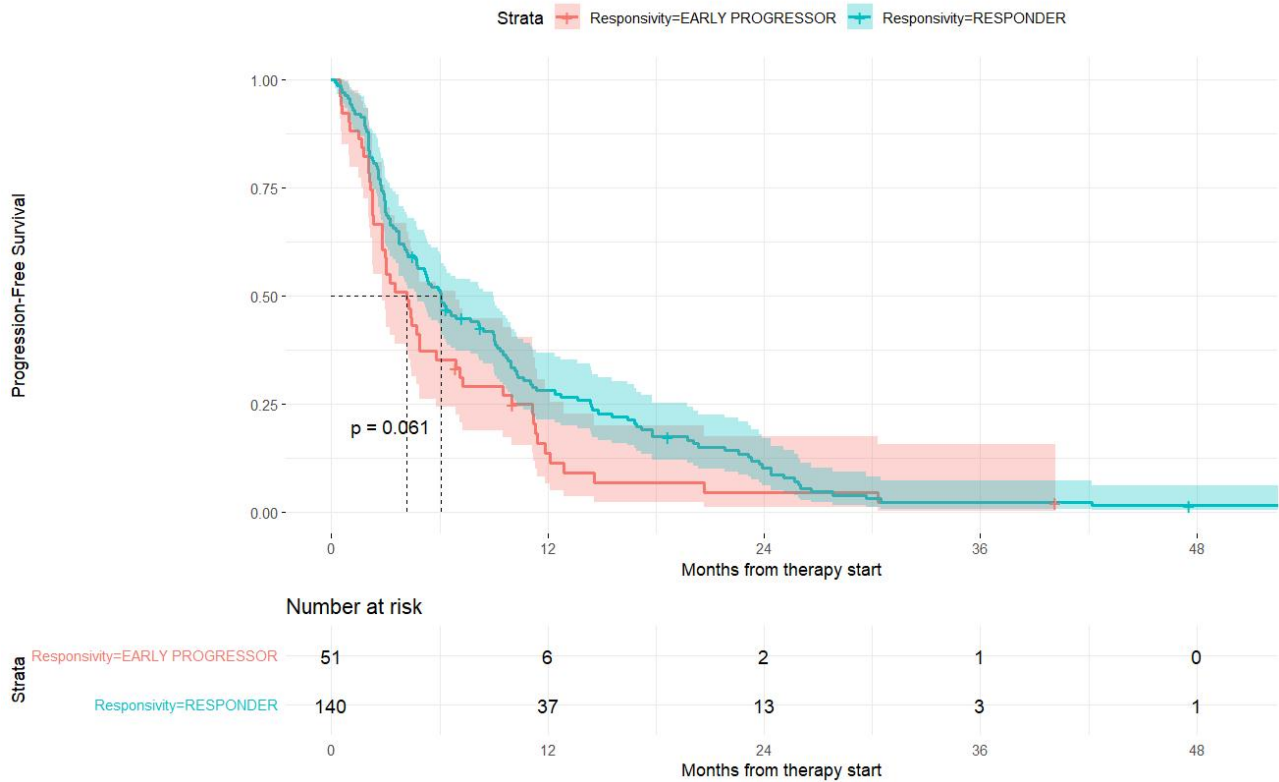
**Supplementary Figure 1.** Overall Survival probability according to time after therapy initiation in the study population, divided by IMDC risk class.



**Supplementary Figure 2.** Progression-free Survival probability to second-line treatment according to time after therapy initiation in the study population, divided by time to first-line VEGFR-TKI monotherapy failure. Patients who progressed in less than 6 months from therapy start are labeled “early progressor”, and patients who progressed beyond 6 months from therapy start are labeled “responder”.



**Supplementary Figure 3.** Progression-free Survival probability to third-line treatment according to time after therapy initiation in the study population, divided by time to first-line VEGFR-TKI monotherapy failure. Patients who progressed in less than 6 months from therapy start are labeled “early progressor”, and patients who progressed beyond 6 months from therapy start are labeled “responder”.



**Supplementary Figure 4.** Bubble chart representing the results of the multivariate analysis. PFS1, expressed in months from therapy start, is indicated on the y-axis. IMDC risk class is indicated on the x-axis. The size of every bubble represents the number of metastatic sites at the diagnosis of mRCC. The color of every bubble indicates the histologic subtype.

