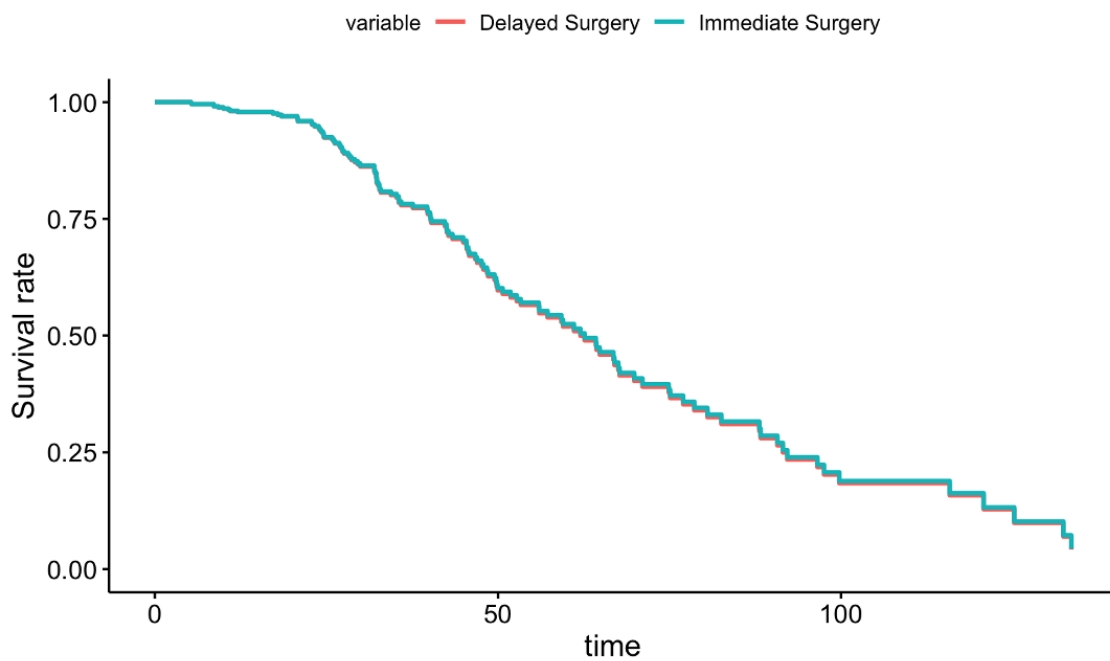
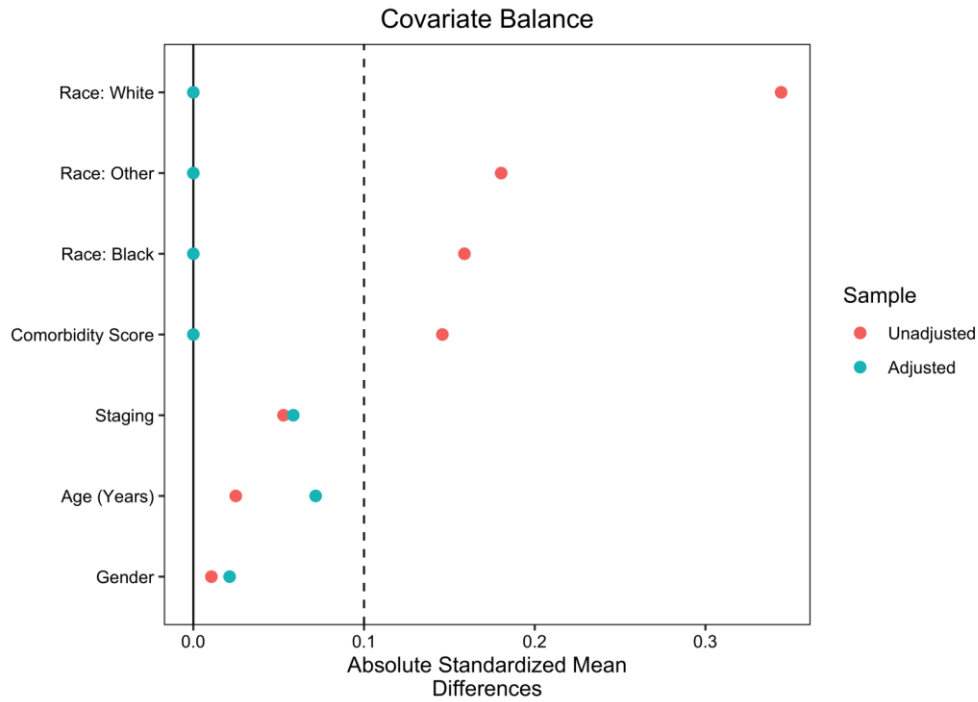


Supplementary Figure 1. Definition of immediate versus delayed surgery.



Supplementary Figure 2. Visualized Survival Function for Delayed vs Immediate Surgery.



Supplementary Figure 3. Love plot showing the propensity-matched groups of IS and DS patients.

Supplementary Table 1. Adjusted Cox Proportional Hazard Model for Risk of Death with Delayed Surgery Defined as 6 Months Post-Induction Therapy

Characteristic	HR ¹	95% CI ¹	p-value
Age	1.00	0.98, 1.02	0.9
Gender			
Female	—	—	
Male	1.02	0.69, 1.51	>0.9
Race			
Black	—	—	
Other	1.60	0.26, 9.70	0.6
White	1.29	0.40, 4.18	0.7
Comorbidity Score	1.45	1.05, 1.99	0.023
Stage	0.97	0.76, 1.23	0.8
Timing of Surgery			
Delayed Surgery	—	—	

Characteristic	HR¹	95% CI¹	p-value
Immediate Surgery	0.70	0.43, 1.14	0.15

¹HR = Hazard Ratio, CI = Confidence Interval

Supplementary Table 2. Cox Regression treating the days until surgery as continuous

Characteristic	HR¹	95% CI¹	p-value
Age	1.01	0.99, 1.02	0.3
Gender			
Female	—	—	
Male	1.07	0.80, 1.42	0.7
Race			
Black	—	—	
Other	0.84	0.23, 3.15	0.8
White	0.76	0.39, 1.51	0.4
Comorbidity Score	1.14	0.89, 1.45	0.3
Stage	1.02	0.86, 1.22	0.8
Days until Surgery	1.00	1.00, 1.00	0.5

¹HR = Hazard Ratio, CI = Confidence Interval