

Supplementary Figure

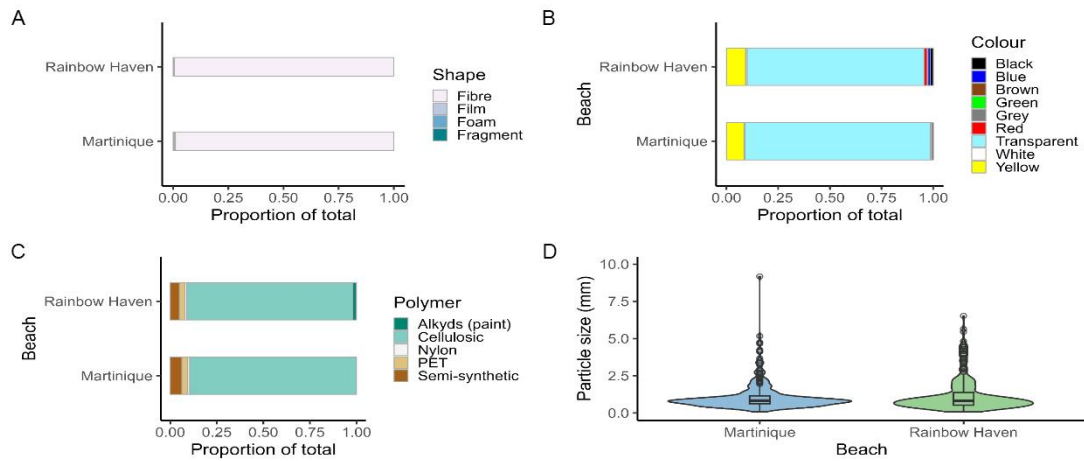
Plastic and anthropogenic microfiber pollution on exposed sandy beaches in Nova Scotia, Canada

Noreen E. Kelly¹, Olga Trela¹, Heidi Gavel^{1,2}

¹Fisheries and Oceans Canada, Bedford Institute of Oceanography, Dartmouth B2Y 4A2, Nova Scotia, Canada.

²Department of Environmental Science, St. Mary's University, Halifax B3H 3C3, Nova Scotia, Canada.

Correspondence to: Dr. Noreen E. Kelly, Fisheries and Oceans Canada, Bedford Institute of Oceanography, 1 Challenger Drive, Dartmouth B2Y 4A2, Nova Scotia, Canada. E-mail: noreen.kelly@dfo-mpo.gc.ca



Supplementary Figure 1. Comparison of MP and anthropogenic particle characteristics between Martinique and Rainbow Haven beaches (all intertidal positions combined). (A) Particle shape and (B) colour, as a proportion percentage of all particles found ($n = 2,229$); (C) polymer composition as a proportion percentage of all particles identified using FTIR ($n = 200$); and (D) size, measured as longest dimension (in mm). PET: Polyethylene terephthalate.