

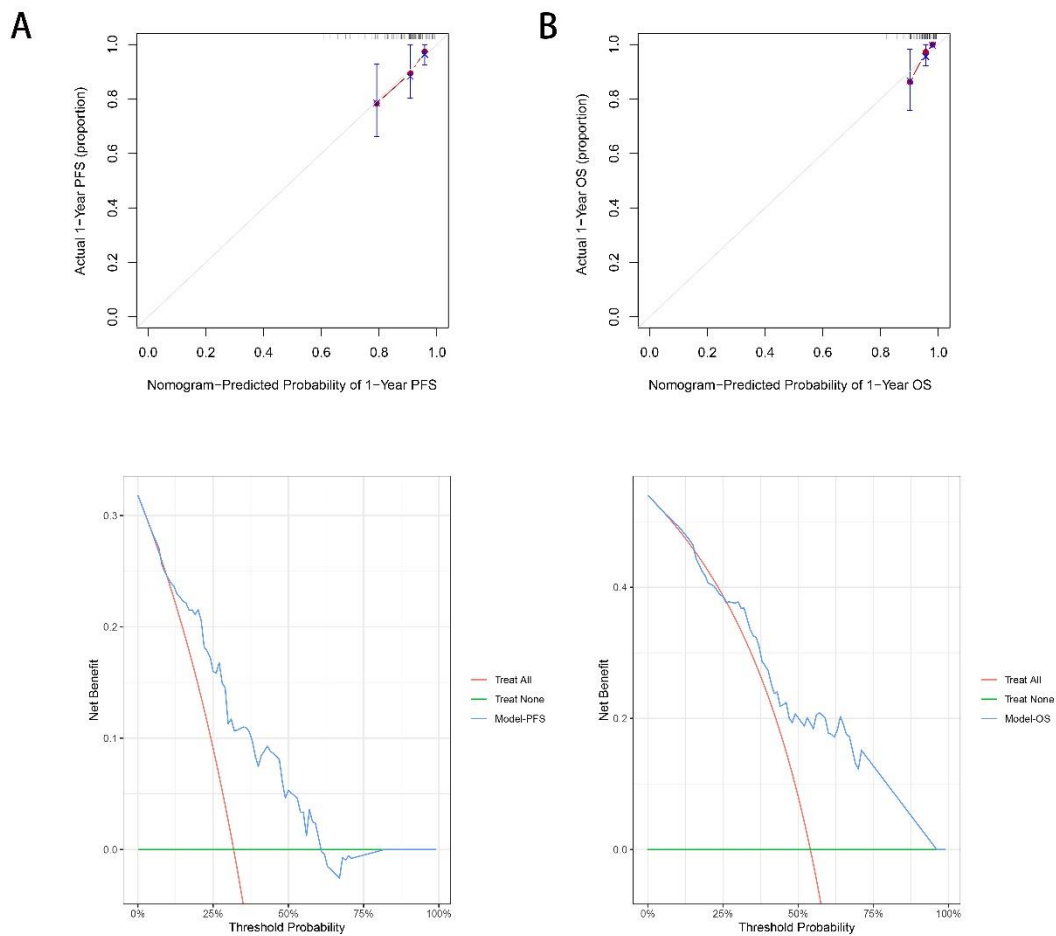
## **Supplementary Materials**

**Zhihuan Lin<sup>#</sup>, Jianhua Zhan<sup>#</sup>, Li Zhang**

Department of Medical Oncology, Sun Yat-sen University Cancer Center, State Key Laboratory of Oncology in South China, Collaborative Innovation Center for Cancer Medicine, Guangzhou 510030, Guangdong, China.

<sup>#</sup>Authors contributed equally to this work.

**Correspondence to:** Dr. Li Zhang, Department of Medical Oncology, Sun Yat-sen University Cancer Center, State Key Laboratory of Oncology in South China, Collaborative Innovation Center for Cancer Medicine, 651 Dongfeng Road East, Guangzhou 510030, Guangdong, China. E-mail: [zhangli@sysucc.org.cn](mailto:zhangli@sysucc.org.cn)



**Figure S1.** Calibration curves (upper) and decision curves (lower) to estimate PFS(A) and OS(B). Abbreviations: PFS, progression-free survival; OS, overall survival.

**Table S1. Patients included in current study and their corresponding ImmuneScore**

ID	ImmuneScore
Patient_1	2015.025667
Patient_2	1097.835049
Patient_3	1670.207216
Patient_4	955.828288
Patient_5	1652.717186
Patient_6	1665.011017
Patient_7	1292.049346
Patient_8	964.836836

Patient_9	1668.245691
Patient_10	2095.155768
Patient_11	2254.357777
Patient_12	933.695568
Patient_13	1797.883235
Patient_14	-453.108418
Patient_15	2047.410342
Patient_16	-331.773427
Patient_17	479.526277
Patient_18	1060.525901
Patient_19	615.566799
Patient_20	500.48781
Patient_21	1862.950158
Patient_22	608.425662
Patient_23	3141.826159
Patient_24	343.05867
Patient_25	818.157578
Patient_26	-573.220359
Patient_27	2154.034009
Patient_28	964.592399
Patient_29	2094.502857
Patient_30	1721.476246
Patient_31	2573.780276
Patient_32	2551.139486
Patient_33	927.930517
Patient_34	2760.841465
Patient_35	1085.816208
Patient_36	1592.524389
Patient_37	1690.248394
Patient_38	-160.416379
Patient_39	2369.721222
Patient_40	324.327047
Patient_41	1979.84715

Patient_42	1322.620823
Patient_43	1229.756831
Patient_44	-292.049477
Patient_45	2491.935991
Patient_46	2489.72717
Patient_47	1406.385657
Patient_48	-553.611229
Patient_49	2412.423896
Patient_50	1931.100795
Patient_51	153.36084
Patient_52	2217.688983
Patient_53	1606.827489
Patient_54	1150.324007
Patient_55	2068.242525
Patient_56	1580.393245
Patient_57	2506.484036
Patient_58	2132.15029
Patient_59	1340.851278
Patient_60	960.925812
Patient_61	2079.471077
Patient_62	672.959989
Patient_63	1005.42554
Patient_64	-155.308006
Patient_65	1156.731395
Patient_66	790.201971
Patient_67	2431.740813
Patient_68	2599.002622
Patient_69	1939.394366
Patient_70	1966.027501
Patient_71	1219.827724
Patient_72	792.470286
Patient_73	1657.821699
Patient_74	1019.908372

Patient_75	2670.815957
Patient_76	1012.476907
Patient_77	-220.791257
Patient_78	1484.654819
Patient_79	1870.832161
Patient_80	669.249579
Patient_81	1552.655573
Patient_82	-82.75682
Patient_83	652.074217
Patient_84	1953.584764
Patient_85	1768.018943
Patient_86	1961.925478
Patient_87	2276.094666
Patient_88	1007.476708
Patient_89	2007.382002
Patient_90	114.711217
Patient_91	1291.463436
Patient_92	975.586141
Patient_93	439.614567
Patient_94	2089.09381
Patient_95	1451.9429
Patient_96	2522.31526
Patient_97	259.072188
Patient_98	3114.141904
Patient_99	2143.00897
Patient_100	321.181323
Patient_101	585.952432
Patient_102	504.817479
Patient_103	1642.43057
Patient_104	470.012789
Patient_105	1181.705692
Patient_106	527.212144
Patient_107	454.575316

Patient_108	1265.657974
Patient_109	1197.149328
Patient_110	1380.459445
Patient_111	1233.406012
Patient_112	-400.143474
Patient_113	1282.324754

---