

Supplementary Material

Printing surface cuprous oxides featured liquid metal for non-enzymatic electrochemical glucose sensor

Yiyao Luo^{1,#}, Gengcheng Liao^{1,#}, Zixuan Guo¹, Zongyu Huang^{1,3}, Long Ren^{2,*}, Xiang Qi^{1,*}

¹Hunan Key Laboratory of Micro-Nano Energy Materials and Devices, School of Physics and Optoelectronic, Xiangtan University, Hunan 411105, P. R. China.

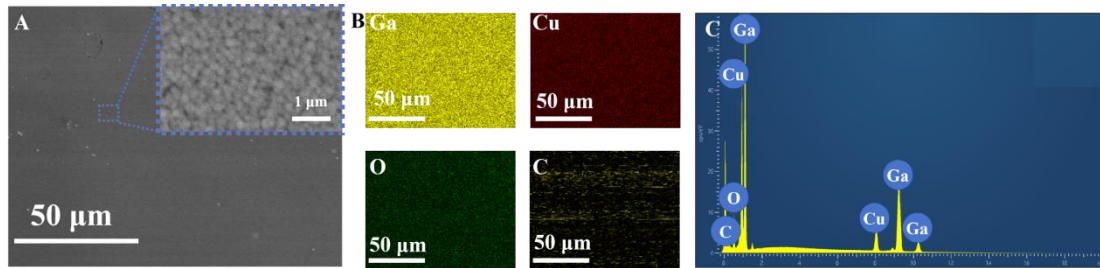
²State Key Laboratory of Advanced Technology for Materials Synthesis and Processing, International School of Materials Science and Engineering, Wuhan University of Technology, Wuhan 430070, P. R. China.

³Hunan Key Laboratory of Two-Dimensional Materials, Hunan University, Changsha 410082, P. R. China.

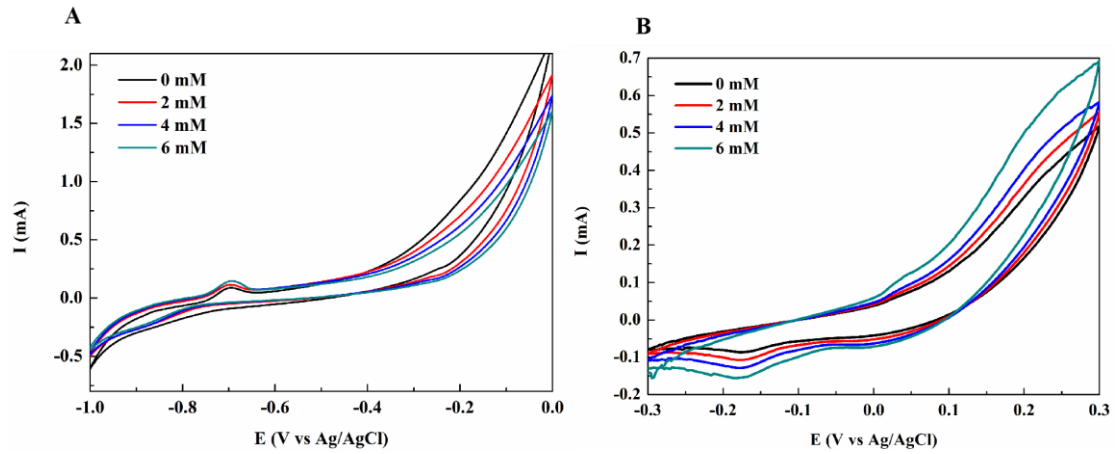
*Correspondence to:

Prof. Long Ren, E-mail address: renlong@whut.edu.cn;

Prof. Xiang Qi, E-mail address: xqi@xtu.edu.cn



Supplementary Figure 1. (A and B) SEM image and corresponding elemental mapping of the $\text{CuO}_x\text{-Ga}$ electrode; (C) SEM-EDX spectrum of $\text{CuO}_x\text{-Ga}$ electrode.



Supplementary Figure 2. CV of ACO electrode in different concentration of glucose (0, 2, 4, 6, 8 mM) in (A) Ringer's Solution containing 0.1 mol/L NaCl and (B) SBF solution containing 0.1 mol/L NaCl.