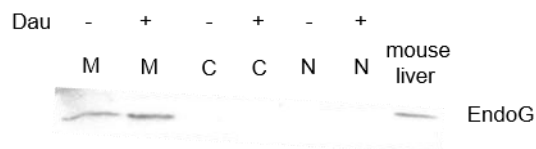


Supplementary Figure 1. Procedure of DNA fragment isolation. (A) A scheme of collecting fragmented DNA. Fragmented DNA was obtained by the centrifuge just after the cell lysis. (B) With this method, fragmented DNAs are clearly appeared in the supernatant of the cell lysate.



Supplementary Figure 2. EndoG translocation from mitochondria to nuclei was not observed with Daunorubicin treatment. 100nM Daunorubicin was treated to miPS-LLCcm cells for 12 h. M: Mitochondrial, C: cytoplasmic, and N: nuclear. Proteins extracted from mouse liver was used as a positive control.