

Figure S1. Prevalence of FISH abnormalities according to IGHV mutational status. (A) Frequencies of FISH alterations in IGHV mutated patients. (B) Frequencies of FISH alterations in IGHV unmutated patients.

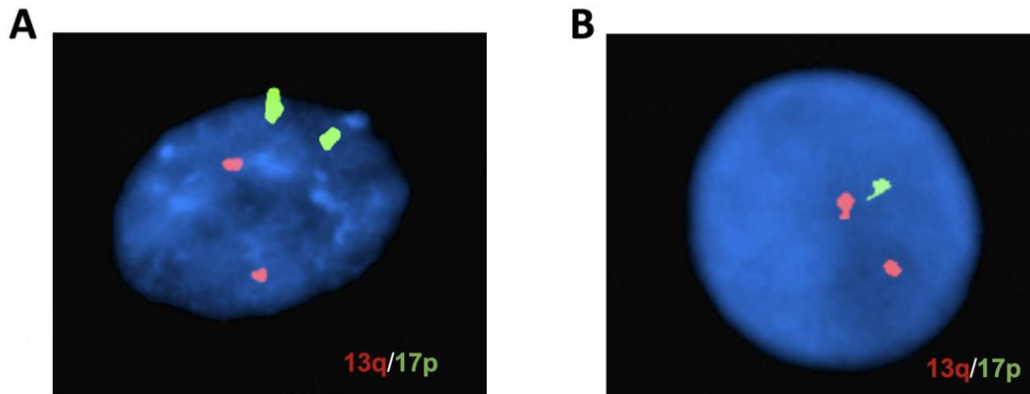


Figure S2. FISH analysis of 13q and 17p deletion in a CLL patient who acquired 17p deletion. (A) Baseline FISH analysis documented two copies of the region mapped on chromosome 13q (in red) and two copies of the region mapped on chromosome 17p (in green). (B) Sequential FISH analysis documented two copies of the region mapped on chromosome 13q (in red) and one copy of the region mapped on chromosome 17p (in green) therefore indicating the acquisition of 17p deletion.