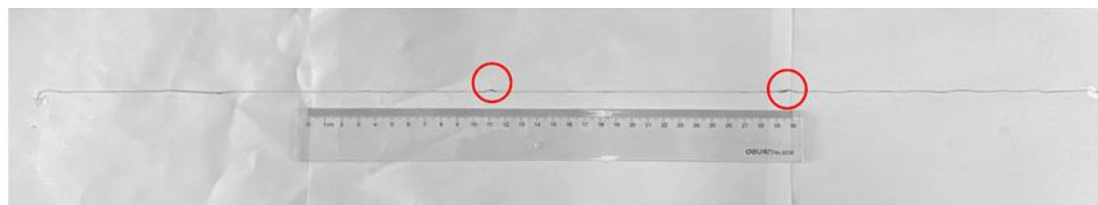
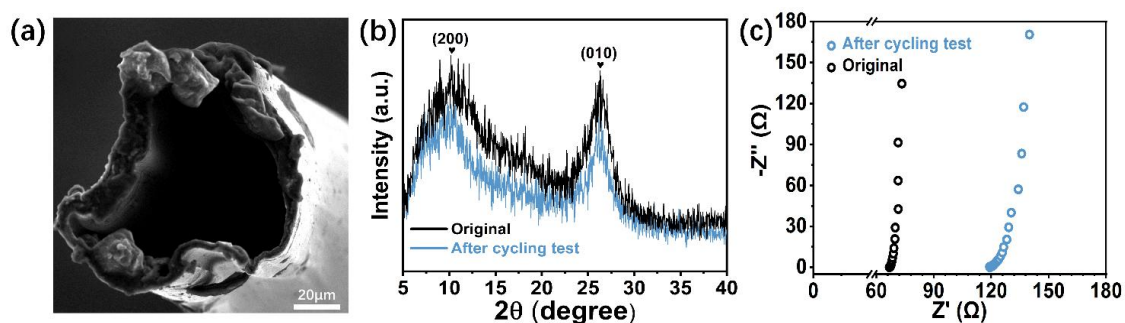


1 **Supplementary Material: Thin-walled hollow fibers for flexible high energy**
2 **density fiber-shaped supercapacitors**



5
6 Supplementary Figure.1 Photograph of a HPF with a length of approximately 0.7m.



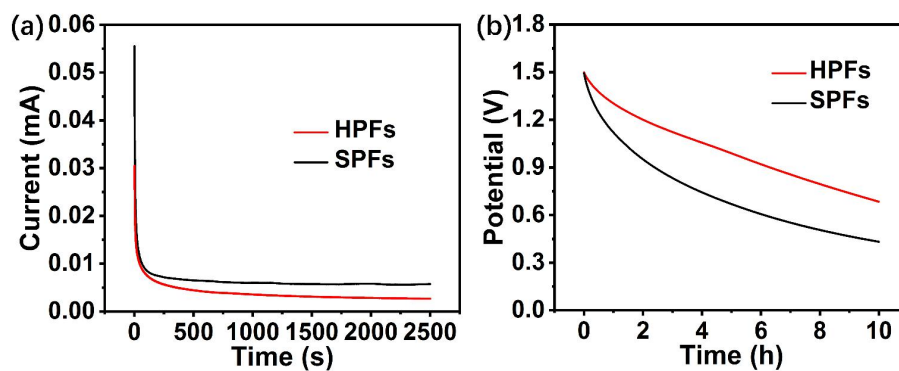
12
13 Supplementary Figure.2 (a) SEM of HPFs after cycling test. (b-c) XRD and EIS
14 comparison of HPFs before and after cycling test.
15



© The Author(s) 2021. Open Access This article is licensed under a Creative Commons Attribution 4.0 International License (<https://creativecommons.org/licenses/by/4.0/>), which permits unrestricted use, sharing, adaptation, distribution and reproduction in any medium or

format, for any purpose, even commercially, as long as you give appropriate credit to the original author(s) and the source, provide a link to the Creative Commons license, and indicate if changes were made.





16

17 Supplementary Figure.3 HPFs and SPFs based FSCs: (a) leakage current, (b)
18 self-discharge.

19