

Supplementary Materials

Pneumonia promotes pulmonary metastasis of HCC after transplantation via VEGF regulated PI3K/AKT/Cas-9 signaling and angiogenesis

Runzhou Zhuang^{1,2}, Di Lu^{2,3,4}, Jianyong Zhuo², Siyi Dong⁵, Shusen Zheng², Qiang Wei^{2,3,4}, Xiao Xu^{2,3,4}

¹Department of Thoracic surgery, The First Affiliated Hospital of Zhejiang University School of Medicine, Hangzhou, Zhejiang 310000, China.

²NHFPC Key Laboratory of Combined Multi-Organ Transplantation, Institute of Organ Transplantation, Zhejiang University, Hangzhou, Zhejiang 310003, China.

³Department of Hepatobiliary and Pancreatic Surgery, Zhejiang Provincial People's Hospital, Affiliated People's Hospital, Hangzhou Medical College, Hangzhou, Zhejiang 310014, China.

⁴Institute of Translational Medicine, Zhejiang University School of Medicine, Hangzhou 310029, China.

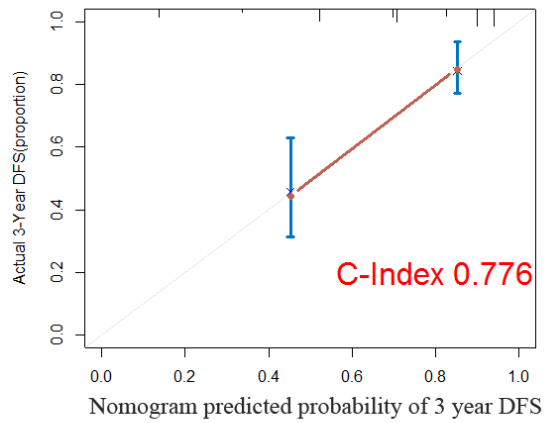
⁵China Liver Transplant Registry, Hangzhou, Zhejiang 310000, China.

Correspondence to: Prof. Xiao Xu, NHFPC Key Lab of Combined Multi-Organ Transplantation, Zhejiang University School of Medicine, 79 Qingchun Road Hangzhou, Hangzhou, Zhejiang 310000, China. E-mail: zjxu@zju.edu.cn; Dr. Qiang Wei, NHFPC Key Lab of Combined Multi-Organ Transplantation, Zhejiang University School of Medicine, 79 Qingchun Road Hangzhou, Hangzhou, Zhejiang 310000, China. E-mail: zjuwq@zju.edu.cn

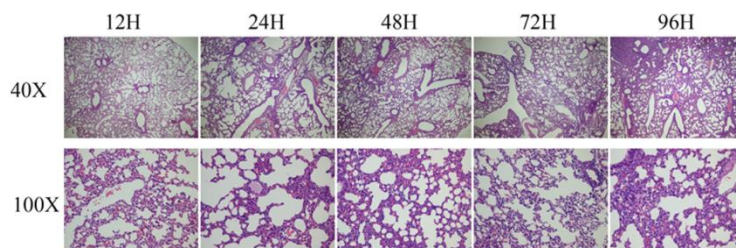
Supplementary Table 1: Sites of recurrence after liver transplantation.

Sites of metastasis	Without Pneumonia (<i>n</i> = 151)	Pneumonia (<i>n</i> = 83)
lung	16	32
liver allograft	26	13
bone	9	6

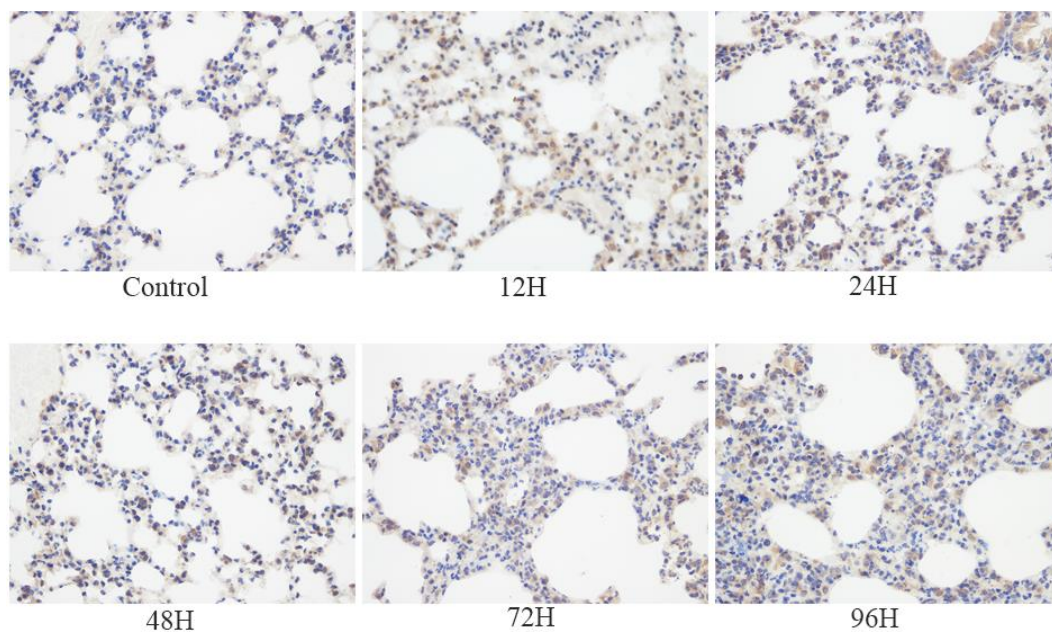
brain	1	1
Abdomen (extrahepatic)	6	2
chest	0	2



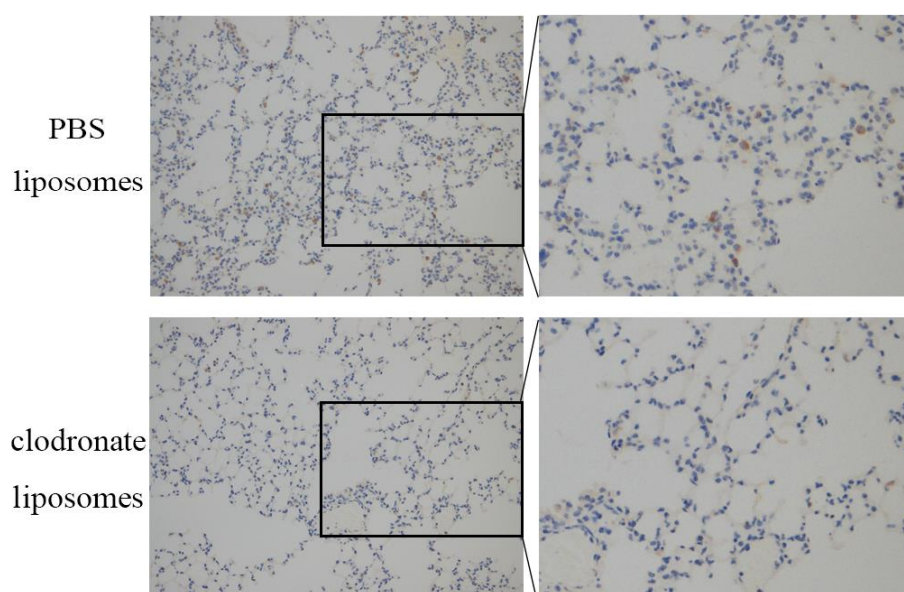
Supplementary Figure 1. C-index of nomogram predicting model for overall survival (A) and pulmonary metastasis (B).



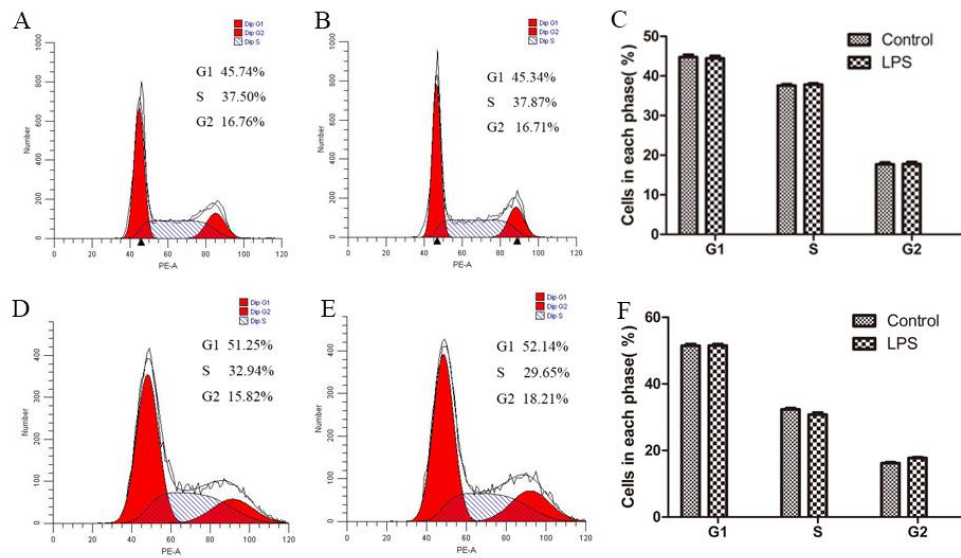
Supplementary Figure 2. HE staining of the mice lung for different time intervals following LPS instillation.



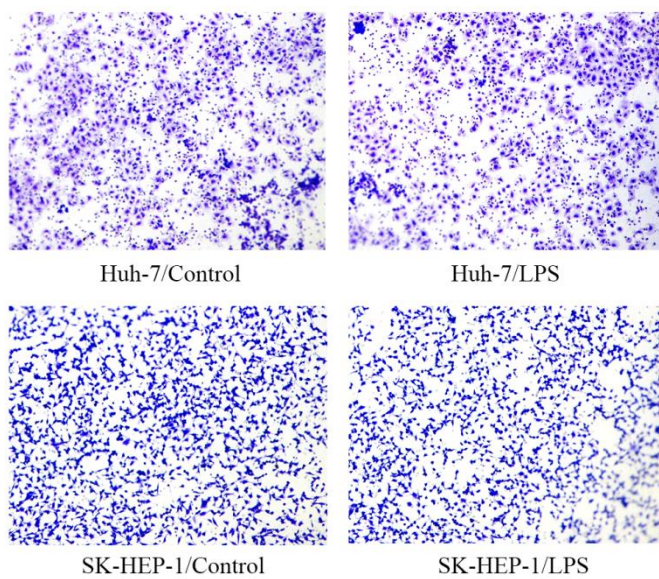
Supplementary Figure 3. Immunohistochemistry staining of TGF- β of mice lung following LPS instillation of different time interval.



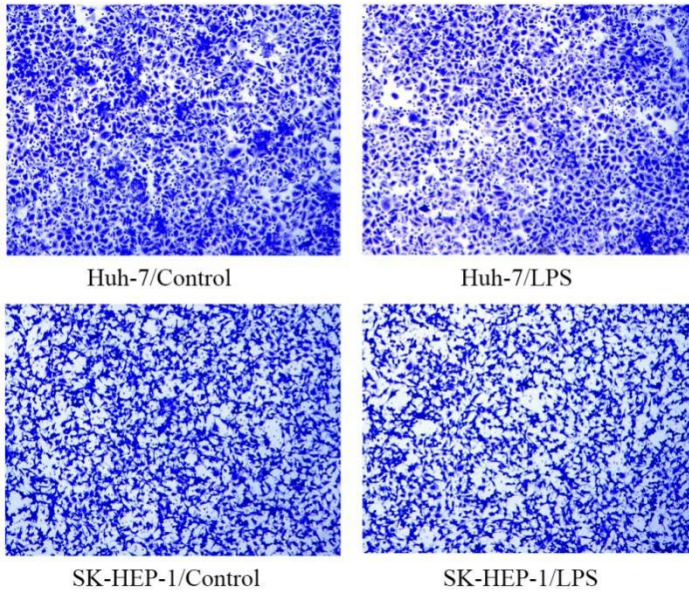
Supplementary Figure 4. Immunostaining of F4/80 of the mice lungs following PBS or clodronate liposomes.



Supplementary Figure 5. Cell cycle of HCC cells cultured in Control -conditioned and LPS -conditioned medium as indicated by flow cytometry.



Supplementary Figure 6. Migration of HCC cells cultured in Control -conditioned and LPS -conditioned medium.



Supplementary Figure 7. Invasion of HCC cells cultured in Control -conditioned and LPS - conditioned medium.