

Supplementary Materials

CuO foam with *in-situ* grown polyaniline for high sensitivity room temperature NO₂ gas sensors

Feihu Li¹, Zichang Zhang¹, Shuni Li¹, Zili Zhan¹, Peng Wang¹, Fang Fang¹, Yeguang Zhang^{1,2,*}, Haoxiang Zhang^{3,4,*}, Shengzhong Liu^{3,4}

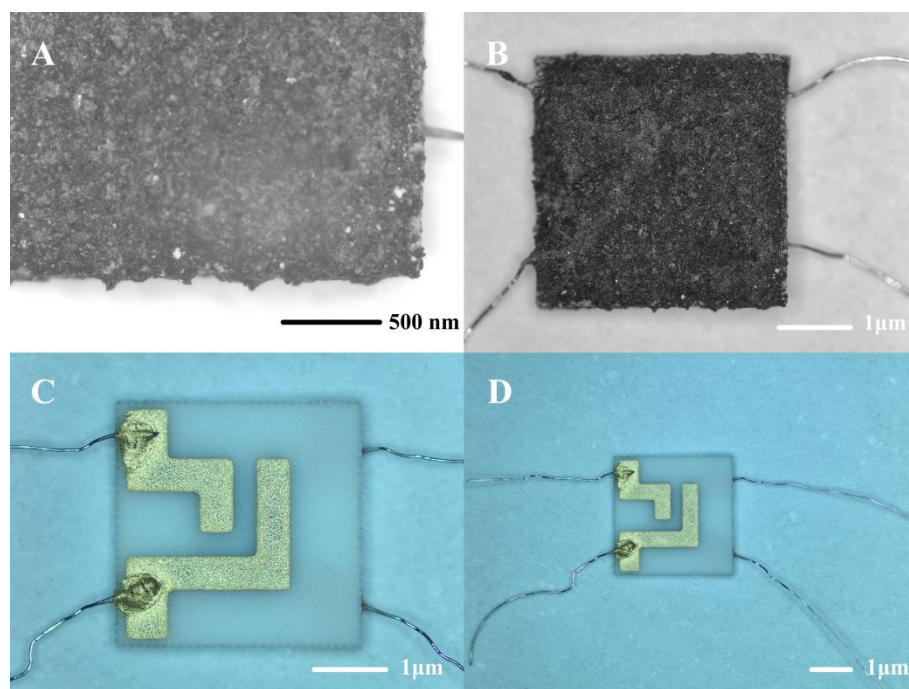
¹School of Chemical Engineering, Zhengzhou University, Zhengzhou 450001, Henan, China.

²State Key Laboratory of Fine Chemicals, Dalian University of Technology, Dalian 116024, Liaoning, China.

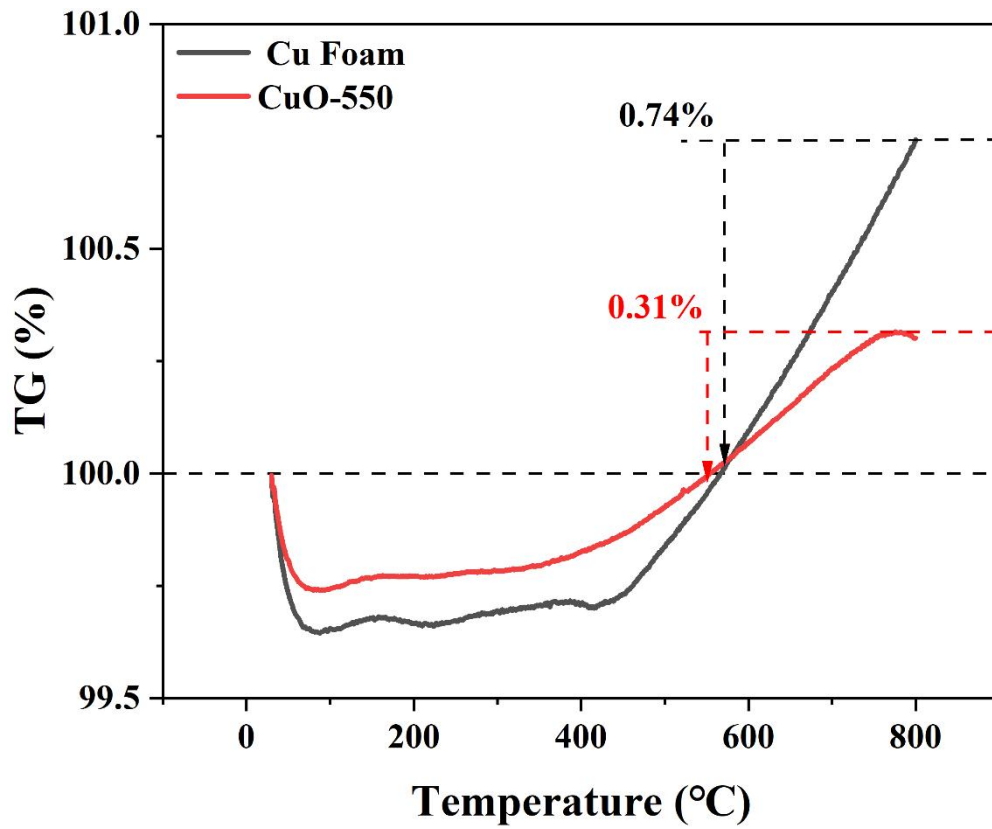
³Key Laboratory of Photoelectric Conversion and Utilization of Solar Energy, Dalian Institute of Chemical Physics, Chinese Academy of Sciences, Dalian 116023, Liaoning, China.

⁴China Center of Materials Science and Optoelectronics Engineering, University of Chinese Academy of Sciences, Beijing 100049, China.

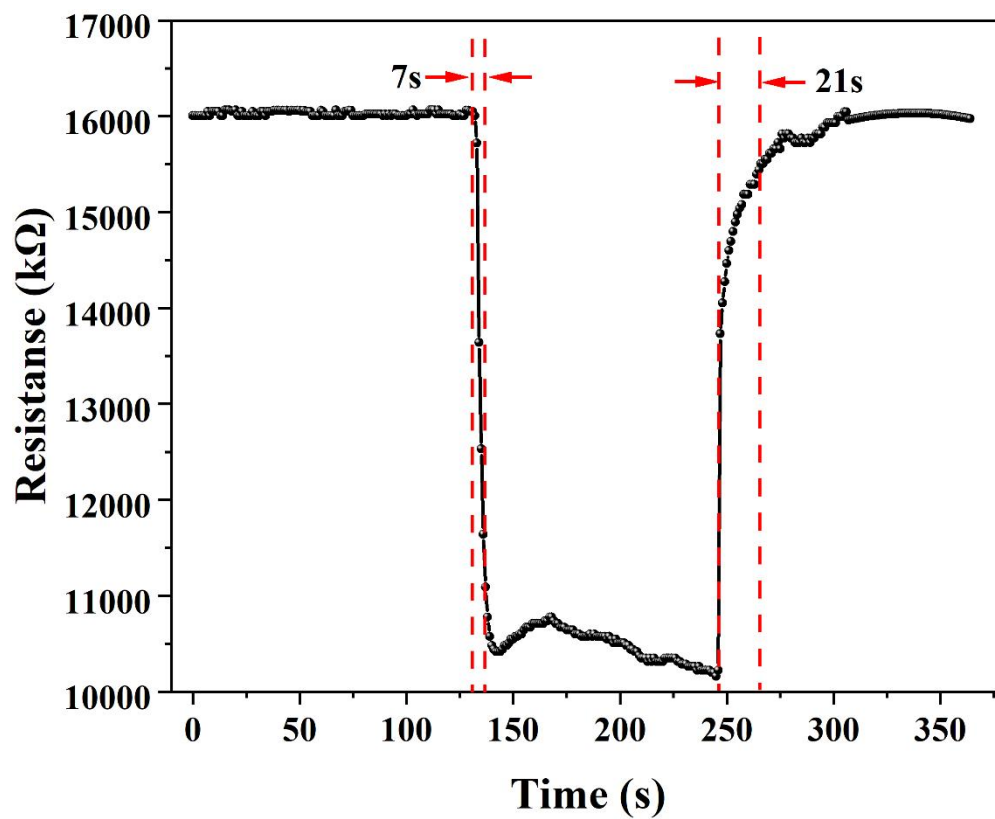
***Correspondence to:** Dr. Yeguang Zhang, School of Chemical Engineering, Zhengzhou University, Zhengzhou 450001, Henan, China. E-mail: zhangyg@zzu.edu.cn; Dr. Haoxiang Zhang, Key Laboratory of Photoelectric Conversion and Utilization of Solar Energy, Dalian Institute of Chemical Physics, Chinese Academy of Sciences, Dalian 116023, Liaoning, China. E-mail: haoxiangzhang@dicp.ac.cn



Supplementary Figure 1. OM images of (A) and (B) CuO-PANI coated on the planar electrode, (C) and (D) Planar electrode.



Supplementary Figure 2. Thermogravimetric analysis curves of copper foams and CuO-550.



Supplementary Figure 3. Response and recovery curve towards 100 ppm NO₂ at RT for CuO.